


EVOLUTION 200

High performance and
reliability for mid-traffic
commercial and premium
residential buildings


19
FLOOR

TKE





THE IDEAL SOLUTION THAT SEAMLESSLY FITS YOUR BUILDING



Featuring the latest technology, evolution 200 delivers powerful and reliable performance for mid-to-high-traffic commercial and premium residential buildings with up to 40 stops.

With its adjustable cabin dimensions and optimal shaft efficiency, evolution 200 fits seamlessly in your building – as a new installation, as well as a full replacement solution for modernisation projects.

Predesigned cabin interiors specifically developed to suit different types of public building uses and our custom-fit solutions, ensure your elevator has the design that matches your needs.

All these characteristics make evolution 200 the perfect solution for commercial or residential buildings in the premium segment.

OVERVIEW EVOLUTION 200

Elevator type	Machine room-less
Load	630 kg to 2,500 kg
Speed	1.0 / 1.6 / 2.0 / 2.5 / 3.0 m/s
Travel height	Up to 100 m
Number of stops	Up to 40 stops
Cabin	Predesigned cabins / Custom-fit solutions
Door types	Side-opening with 2 panels / Central-opening with 2 or 4 panels
Door opening width	From 800 mm to 2,300 mm
Door height	From 2,000 mm to 2,500 mm



CONTENTS

1	evolution 200 product brochure
2	Introduction
4	Benefits at a glance
6	Performance and safety
7	Passenger comfort
8	Energy efficiency
10	Design your evolution 200
11	Design Line A
13	Design Line B
15	Design Line C

17	Ceilings, handrails and more
20	Cabin operating panels
22	Series 50 landing fixtures
23	Other landing fixtures
25	Selected features and options
26	Plan your evolution 200
27	Shaft layout
28	Door options
29	Shaft dimensions
33	About TK Elevator

Our product portfolio



synergy 100

Pure and efficient. The ideal lift for functional residential buildings. Timeless design, quality components and outstanding price-performance ratio.



synergy 200

Flexible and versatile. Our elevator with the broadest application possibilities, ranging from residential to commercial buildings with up to 20 stops.



evolution 200

The high-performance elevator of choice for mid-rise commercial buildings that require up to 100 m travel height and maximum reliability.



evolution 300

Powerful and customisable. Ideal for mid-to-high-traffic commercial buildings with heavy-duty performance and custom-fit design requirements.

Performance, design and efficiency in one elevator



Space efficiency and flexibility

Whether you choose standard dimensions for overhead and pit or a version with reduced dimensions – evolution 200 is best-in-class. In addition to the available standard cabin dimensions, you can match the cabin size to the shaft in 50-mm-steps.



Energy efficiency

Economical and powerful – not a contradiction for evolution 200. The latest TK Elevator technology (like the energy efficient machine, LED lighting and smart energy management) uses less energy than other elevators with the same performance.



Flexible design

Select one of the predesigned cabin interiors that are available, or tailor it to your needs with our custom-fit solutions. Choose from high-quality materials like stainless steel, laminate or glass walls in many finishes and colours.

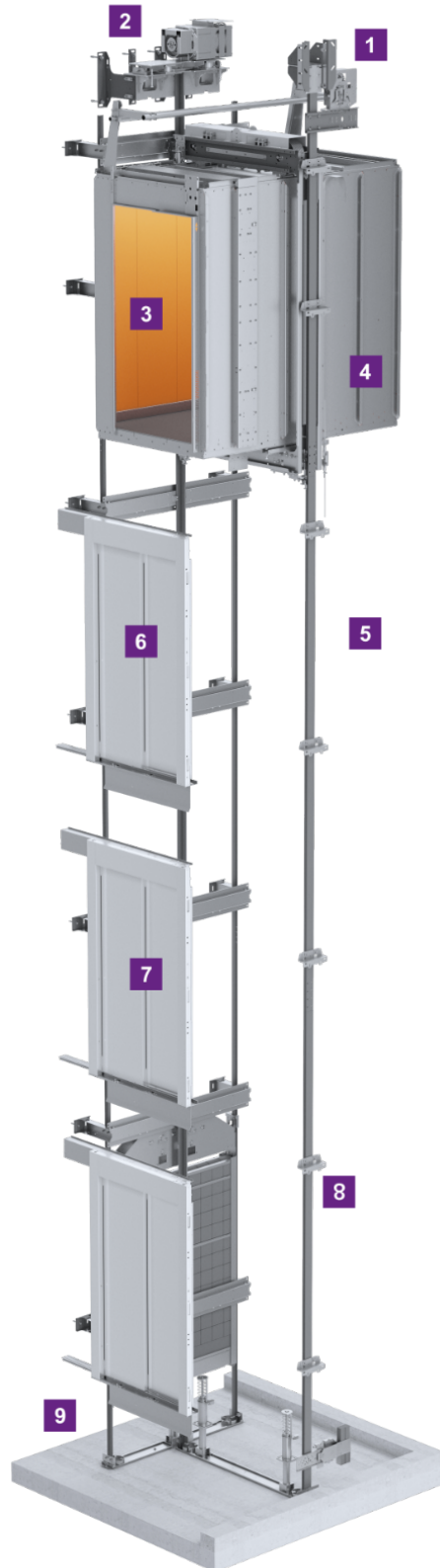


All-round ride comfort

evolution 200 operates very quietly and at very low vibration levels. Smooth acceleration and braking make the elevator ride a pleasant experience.



One elevator. Many benefits.



1. Reduced overhead dimensions
2. Efficient gearless machine made in Germany
3. Flexible cabin design with premium materials
4. Flexible cabin dimensions
5. Smart energy management for enhanced efficiency
6. Variable door openings
7. Automatic Rescue Device (ARD)
8. Sleep mode for energy saving
9. Reduced pit dimensions

Performance



Gearless machine

High performance and quality made in Germany ensure smooth operation and a long and reliable working life. As an option, you can choose a machine that allows up to 240 connections or starts per hour to manage increased traffic volumes.



Controller

Intelligent and flexible low-energy controller with an extremely broad range of functions. Dynamic group control for up to 8 elevators.



Engineering

evolution 200 is engineered and tested by experienced TKE engineers. We guarantee a long-lasting product with optimum performance for your needs.



Doors

Reliable, fast and safe door operation for side opening and central opening doors.

Safety & regulations



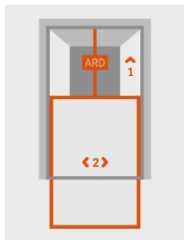
Safest means of transport

All safety elements are manufactured to meet all relevant industry standards and regulations, including TK Elevator's own strict internal Safety, Health and Environment standards, as well as meeting ISO 9001, 14001, 18001 and 50001.



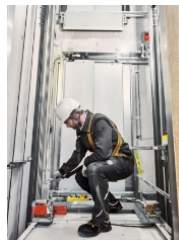
Stay connected 24/7

Whenever you need it, the emergency communication system is there for you, keeping you connected with our 24hr service call center.



Emergency evacuation

In the event of power failure, the Automatic Rescue Device will safely take you to the next floor <1> and open the doors to allow passengers to exit <2>.



Highest standards

We design and test to the highest standards and manufacture our own safety components. Our service concept is built on the basis of ensuring maximum passenger comfort, convenience and safety at all times while protecting the long-term value of your investment.

Comfort



Silent and low vibration

Thanks to high-quality materials and enhanced sound insulation, evolution 200 operates very quietly and with low vibration. Soft acceleration and braking lets passengers experience a smooth ride.



Pleasant atmosphere

The spacious cabin and a great variety of high-quality materials guarantee that passengers feel comfortable in your elevator.



Landing accuracy

evolution 200 enables accurate levelling. Landing accuracy of ± 3 mm ensures safe and comfortable access for passengers.



Accessibility

The standard features of evolution 200 cover most of the accessibility requirements of the new EN 81-70 European standard.



Energy efficiency

Built-in efficiency throughout the product life cycle: Sustainability is part of our corporate DNA. It involves the holistic improvement of our products and processes to help you reduce the environmental footprint of your buildings and qualify for LEED® and BREEAM® certification by incorporating green features in our elevators.

**Learn more about TK Elevator's
ESG efforts**



www.tkelevator.com/global-en/sustainability



Class A rating

Measurements taken on a standard evolution 200 configuration with sleep mode can achieve the highest energy efficiency rating class A in use category 1 to 5, according to ISO 25745-2.



Standby / sleep

Standby mode (standard): Cabin lighting is automatically switched off. Sleep mode (optional): Electronic components are turned off and are instantly activated when the elevator is called.



Regenerative drive

The optional regenerative drive generates electricity when the cabin has a full load going down and is empty going up. The power generated in both situations is then captured and fed into the grid.



Eco/high speed

To save energy, the optional intelligent energy management automatically adjusts elevator speed and door opening times according to traffic volume.



100% LED

LED lighting is included as standard in all lighting devices. It can last 10 times longer and is up to 80% more energy efficient than halogen lighting.



Low energy consumption

Thanks to the highly efficient gearless machine with no contaminant lubricants.

Environmental Product Declaration

evolution 200 has a certified Environmental Product Declaration giving information about the environmental performance and contents, which has been controlled and verified according to the requirements of the International EPD® System. Registration number: S-P-01084. More information at environdec.com

evolution EPD®



www.environdec.com/library/epd1084



Design your evolution 200 elevator

The design lines C, B and A offer endless possibilities to make the elevator part of your building's design concept. From stainless steel to premium laminates or glass walls – you are spoiled by choices.

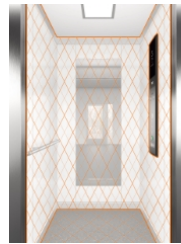
If you are looking for something truly distinctive, exclusive or unique, you can tailor the elevator design to your precise requirements.

Custom-fit options



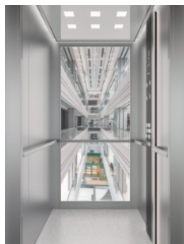
Custom selection

You can individually select all materials within your chosen design line for the rear wall, COP wall or opposite COP wall. In addition, you can choose a ceiling, floor and skirting, handrails and COP.



Custom cabin

With this option, you get a cabin equipped only with a ceiling and a COP from your chosen design line. You are then free to choose your own floor, if you wish, and can also equip the cabin with your own wall finish and skirting.



Panoramic rear wall

Enlarge your views with a panoramic rear wall, always combined with the elegance of stainless steel frames. A panoramic rear wall gives the cabin spaciousness and allows natural light to enter.



Panoramic cabin

Full panoramic cabins have 3 glass walls combined with elegant stainless steel frames. All-round visibility, brightness and optical enlargement of the cabin – the advantages speak for themselves.

Design line A

The predefined cabins of design line A create a unique and exclusive atmosphere, using high-quality materials such as glass or stainless steel.

**Compose your favourite A design
line cabin**



a-design-evolution.tkelevator.com



Predesigned cabins

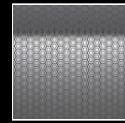
ST = Stainless steel / GL = Glass



Premium stainless steel



A70-ST03



A71-ST04



A72-ST05

Coloured safety glass



A50-GL01



A51-GL03



A52-GL02



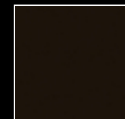
A53-GL08



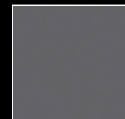
A54-GL11



A55-GL12



A56-GL06



A57-GL13



A58-GL07

Customisable designs



A90-select



A-individual

Cabin A71

ST04 Premium stainless steel honeycomb walls, Alto full height COP with black glass front and 7" display, Runaway ceiling white, custom flooring, stainless steel handrails, full-width / mid-height mirror, aluminium silver skirting

Design line B

Characterised by high-quality laminates and stainless steel, the predesigned cabins of design line B can be easily adapted to your architecture.

**Compose your favourite B design
line cabin**



b-design-evolution.tkelevator.com

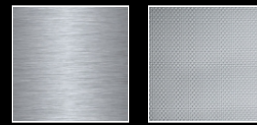


Predesigned cabins

ST= stainless steel / LM-S = laminate shiny / LW = laminate wooden



Stainless steel



B70-ST01

B72-ST02

Colour laminate



B50-LM01S

B51-LM03S

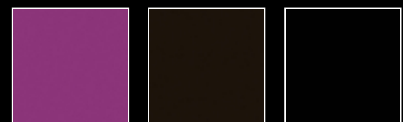
B52-LM02S



B53-LM08S

B54-LM12S

B55-LM05S



B56-LM09S

B57-LM06S

B58-LM07S

Laminate wood finish



B65-LW02

B66-LW03

B67-LW07

Customisable designs



B90-select

B-individual

Predesigned cabin B72

ST02 Premium stainless steel linen walls, IL variable flush COP with 7" display, Grille ceiling white, Concrete Dark Grey vinyl floor, stainless steel handrail, partial-width / partial-height mirror, aluminium silver skirting

Design line C

The clean and neutral predefined cabins create calm and durable environments, easily integrated into different building functions.

**Compose your favourite C design
line cabin**



c-design-evolution.tkelevator.com



Predesigned cabins

ST = Stainless steel / PC = Powder Coated



Stainless steel brushed

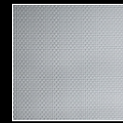


C30-ST01

Premium stainless steel patterned



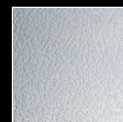
C31-ST10



C32-ST02



C33-ST06



C34-ST07

Powder coated



C02-PC01



C03-PC02

Galvanised steel



C01-naked

Cabin C31

ST10 Premium stainless steel brushed Gr220D (austenitic), Edge COP with stainless steel front and 7" display, LED Plate ceiling, Esquisse grey vinyl flooring, stainless steel handrails, full-width / mid-height mirror, stainless steel skirting

Ceilings, handrails, mirrors and more

Ceilings

Our ceilings complement the colours and materials of the elevator walls. Choose from different lighting styles with direct or indirect lighting to create the desired atmosphere in your cabin.



Grille / white



Lightbox / white



Rocket / white



Eclipse / white



Tiffany / white



Runaway / white



Lightbox large / white



Tiffany large / white



Grille / black



Lightbox / black



Rocket / black



Eclipse / black



Tiffany / black



Runaway / black



Lightbox large / black



Tiffany large / black



LED Spots



Cassette



LED Plate



Custom ceiling

Handrails

Strong stainless steel handrails with straight fixing, curved ends and a brushed or black stainless steel finish perfectly complement your cabin.



Stainless steel satin silver



Stainless steel satin black



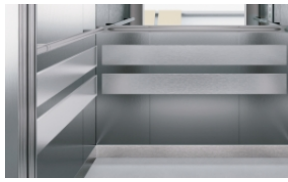
Stainless steel round



Stainless steel surrounding with corner connection

Bumpers

To protect your cabin wall from damage, bumper rails can be mounted as an option in different heights. Available in stainless steel, PVC or wood.



Stainless steel



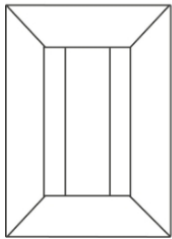
Black PVC



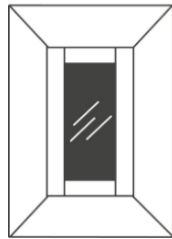
European Oak

Mirrors

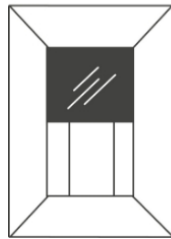
Integrated mirrors in the rear or side walls in case of double entrance, make the cabin feel more spacious and create appealing ceiling light reflections. You can also choose a cabin without mirror.



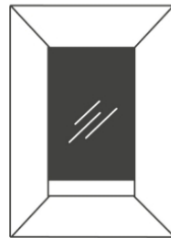
Without mirror



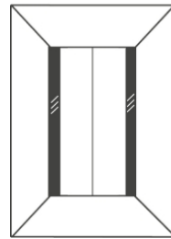
Partial width / partial height



Full width / mid height¹



Full width / full height



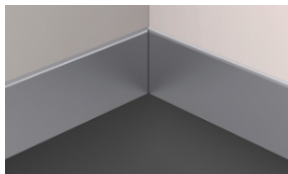
In the door portal recess²

1. For rear wall and double entrance side wall

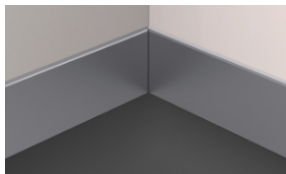
2. For double entrance only

Skirting

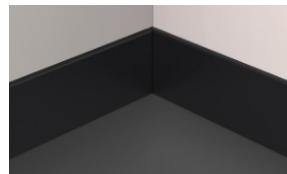
The skirting protects wall panels with long-lasting, high-quality finishes while complementing the decorative theme.



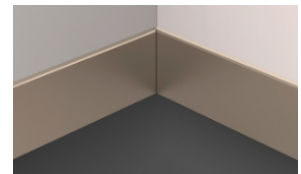
Anodized aluminium silver



Stainless steel brushed



Stainless steel satin black



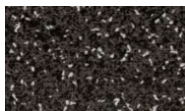
Stainless steel satin champagne

Floors

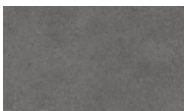
Choose from hard wearing steel flooring for functional requirements or easy to clean vinyls for a more exclusive design. You also have the option to supply your own flooring.



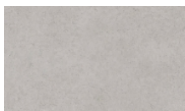
Custom flooring



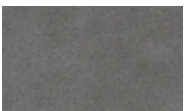
Nature black, vinyl



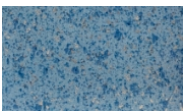
Concrete dark grey, vinyl



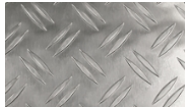
Concrete light grey, vinyl



Esquisse grey, vinyl



Fresh Blue, vinyl



Bulb plate, aluminium



Bulb plate, V2A steel



Cabin operating panels

evolution 200 offers 4 different elegant vertical car operating panels with robust stainless steel or tempered glass surface and an integrated 7" TFT display.

Cabin Operating Panels (COP)



Edge
210/260×1139×32 mm



Edge high
210/260×1932×30 mm



Alto full height
260/310×CH×33 mm



IL variable
230 mm x CH

Vandal resistant and double COP



Edge



Edge high



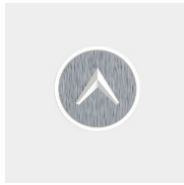
IL variable



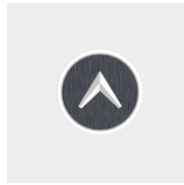
Double COP (C2 doors example)

Push-buttons

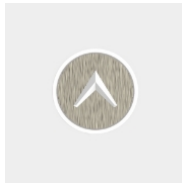
Four different push-buttons are available for evolution. All are conform with the new EN 81-70 and with LED acknowledgement light. The DB push-button is available with Braille lettering. The VB push-button is vandal-resistant and conform with EN 81-71:Cat.2



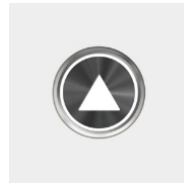
DB02 silver



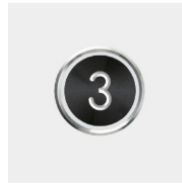
DB02 black



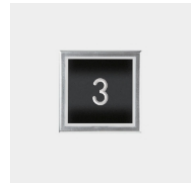
DB02 champagne



VB02 black



Blueton¹



Step Classic²

1. only with IL variable COP
2. only with IL variable COP

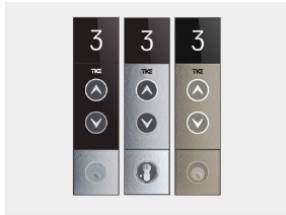




Series 50 landing panels and indicators

Landing Operating Panels

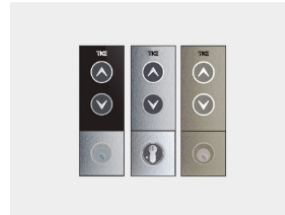
The modular concept of the Series 50 landing operator panels allows a customised configuration. They feature stainless steel buttons, and optionally a TFT 3.5" display as well as a key switch zone. Front plate in stainless steel or black glass.



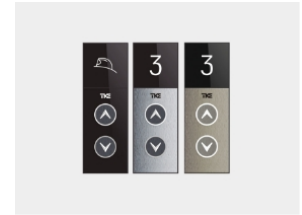
LOP 50 (91 × 350 mm)



LOP 51 (91 × 171 mm)

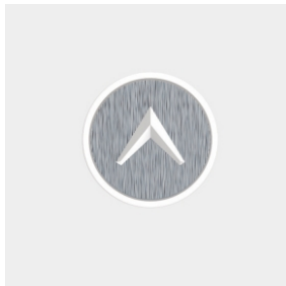


LOP 52 (91 × 261 mm)

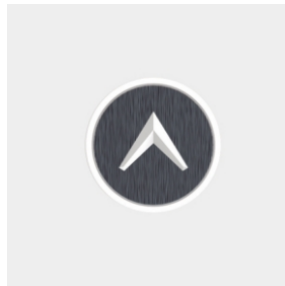


LOP 53 (91 × 261 mm)

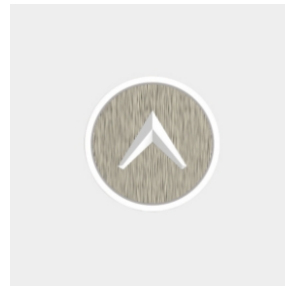
Push-buttons



DB02 stainless steel satin silver



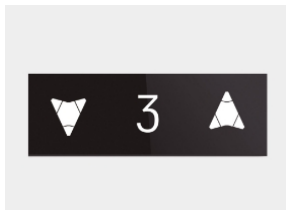
DB02 stainless steel satin black



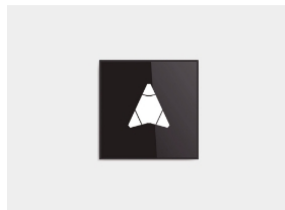
DB02 stainless steel satin champagne

Landing Indicator Panels

Achieve a modern and neutral look with a black glass face plate.



LIP 50 (261 × 91 × 21 mm)

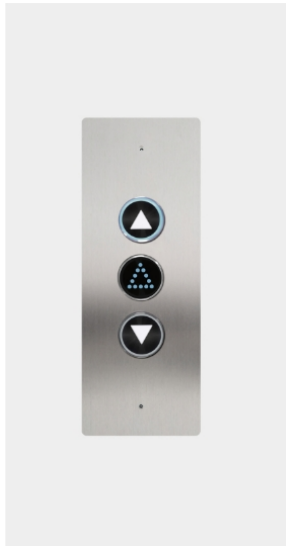


LDIP 50 (91 × 101 × 21 mm)

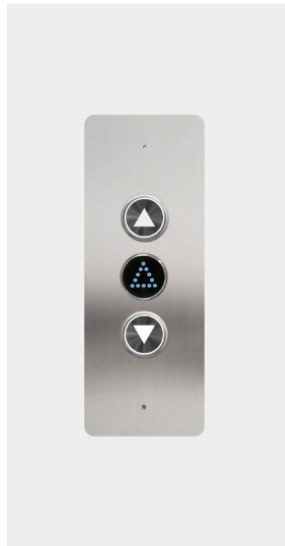
Other landing panels and indicators

Blueton and Step classic LOPs

only available in combination with IL variable COP



Blueton LOP (110x280 mm)



Blueton LOP vandal-resistant

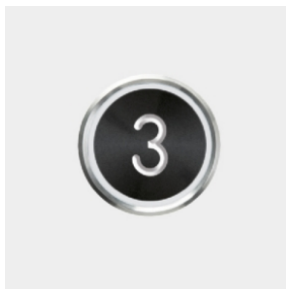


Step Classic LOP (110x280 mm)

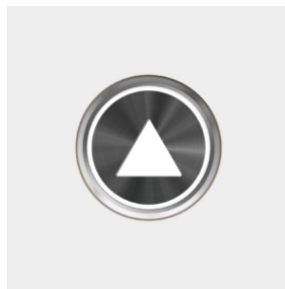


Slim LIOP (55x400x12 mm)

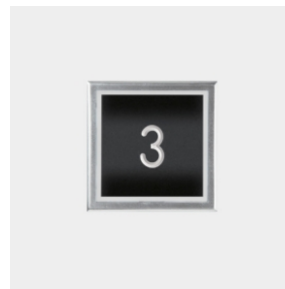
Push-buttons



Blueton stainless steel black



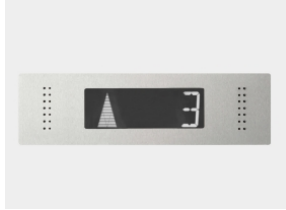
VB02 vandal-resistant stainless steel black



Step classic stainless steel black

Landing Indicator Panels

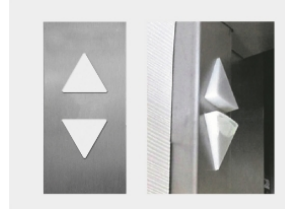
only available in combination with IL variable COP



LIP (280×110 mm)¹



SlimLIP (280×100×26 mm)²



Arrow

- 1. available with black or blue LCD
- 2. available with black or blue LCD



Selected features and options

- Standard
- Option

COMFORT

Accessibility

Door open/close and alarm push-button	●
Big push-buttons with Braille lettering (COP)	●
Round green frame in main floor push-button	●
Adjustable sound level (35-65 dBA)	●
Luminance contrast in fixtures	●
Acoustic request acknowledgement in the operating panel	●
Induction loop for hearing-impaired passengers	○

Access Control

Cancellation calls by double click in COP	○
Key switch in COP/LOP for access/functions	○
Preference / Independent service of COP	○
Out of service LOP	○
Penthouse control	○
VIP function	○
Prepared for card reader LOP/COP	○
COP for disabled persons	○

Others

Car ventilation fan	○
CCTV multimedia travelling cable	○
Roller guides on car and counterweight	○
Cabin noise reduction kit	○
Floor light circuit	○

PERFORMANCE

Parking level in main landing floor	●
Group control system (up to 3 / up to 8 elevators)	○
Building management system (BMS)	○
Extended Building Management System (BMS)	○
Machine 180 starts/hour (1 m/s)	○
Pre-opening of doors	○

Layout

Flexible car dimension in 50 mm-steps	○
Flexible door placement	○
Reduced overhead / reduced pit	○

ENERGY EFFICIENCY

Energy-saving LED lighting	●
Cabin lighting stand-by	●
Sleep mode	○
Regenerative drive	○
Trip Counter/Service metre	●
Highspeed/Eco mode	●
Selectable controller cabinet position	○

SAFETY & REGULATIONS

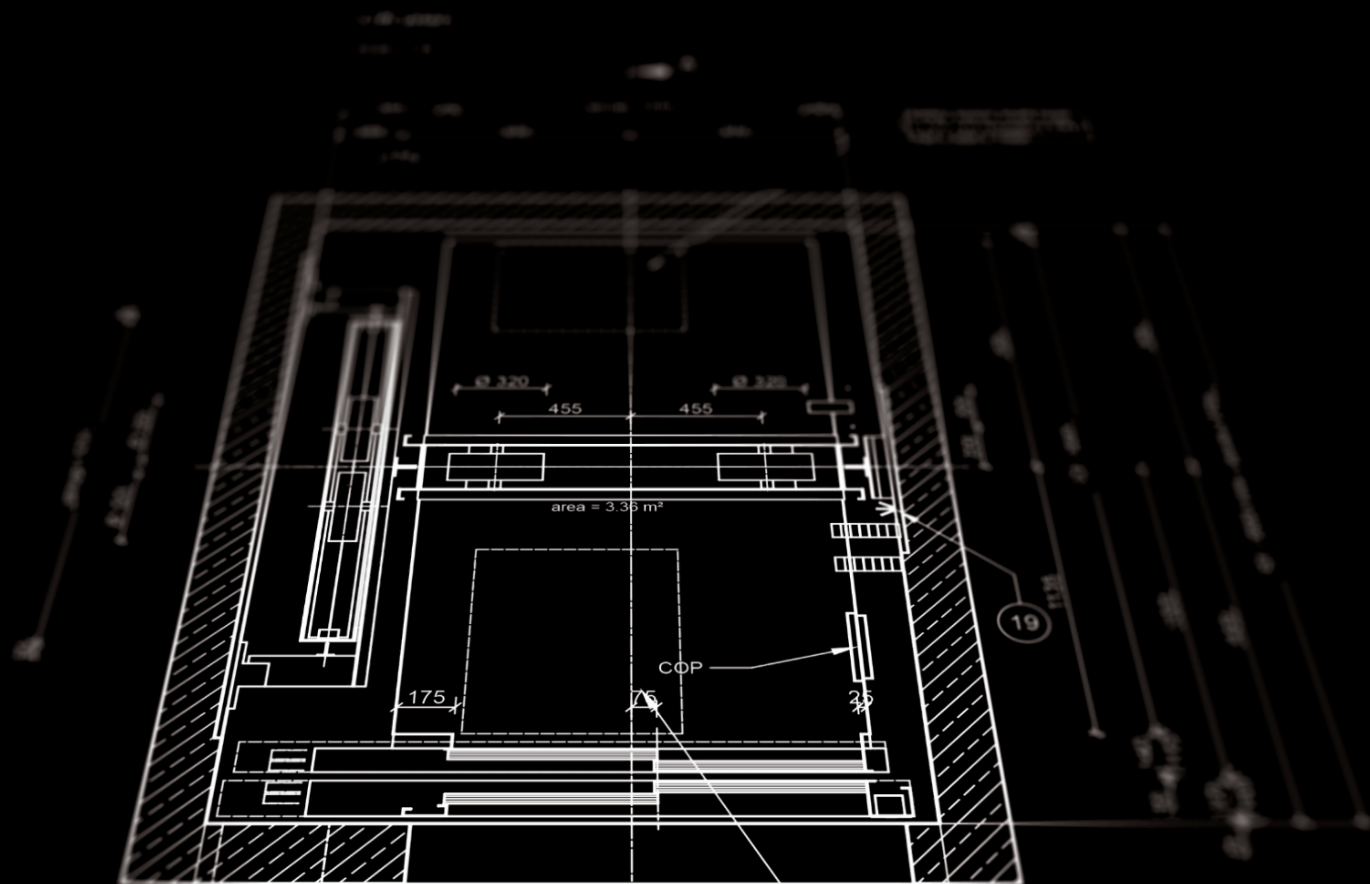
Prevention of empty car runs	●
Light curtain protection	●
Light curtain protection 3D	○
Emergency lighting in cabin 1 h	●
Automatic evacuation to next landing	●
Automatic evacuation to any landing	○
Two-/three-way intercom	○
Safety gear on counterweight	○
Water pit sensor	○
Halogen-free shaft wiring (except for the motor and travelling cable)	○
Doors fire rating EI-60 / EI-120	○
EN 81-20/50, Lifts construction and comp. testing	●
EN 81-21, Existing buildings	●
EN 81-28, Emergency call system	●
EN 81-70, Accessibility to lifts	○
EN 81-71, Vandal-resistant, partially Category 1	○
EN 81-72, Fire fighter lift	○
EN 81-73, Fire evacuation	○
EN 81-77, Seismic, Category 0, 1, 2	○

DESIGN

Predesigned cabins	●
Glass walls finish	○
Custom cabin design: wall selection / raw cabin	○
Preparation for customer-supplied flooring	○
Stainless steel COP/LOP	●
Glass faceplate COP/LOP	○
Flush COP	○
TFT 7" display in COP	●
LCD display in COP	○
Courtesy LED backlighting in COP	○
LOP, LIP and LDIP surface-mounted on door frame or wall	○
Landing doors in primed coating RAL 7032	●
Landing doors in powder coating RAL 9016, RAL 9006	○
Landing doors in ferritic stainless steel Gr.220D (AISI 441)	○
Landing doors in premium stainless steel	○
Cabin doors in ferritic stainless steel Gr.220D (AISI 441)	●
Cabin doors in premium stainless steel	○
Full panoramic cabin or glass rear wall	○
Framed or frameless glass doors	○

To discover all options available for evolution 200, please contact your local TK Elevator sales representative. The details quoted in this sheet can only be viewed as binding when confirmed expressly in writing.

PLANNING



evolution ePlanning tool

Make the most of your building space and find the optimal dimensions for your new evolution 200 cabin. All you need is either the shaft or cabin measurements.



Shaft layout

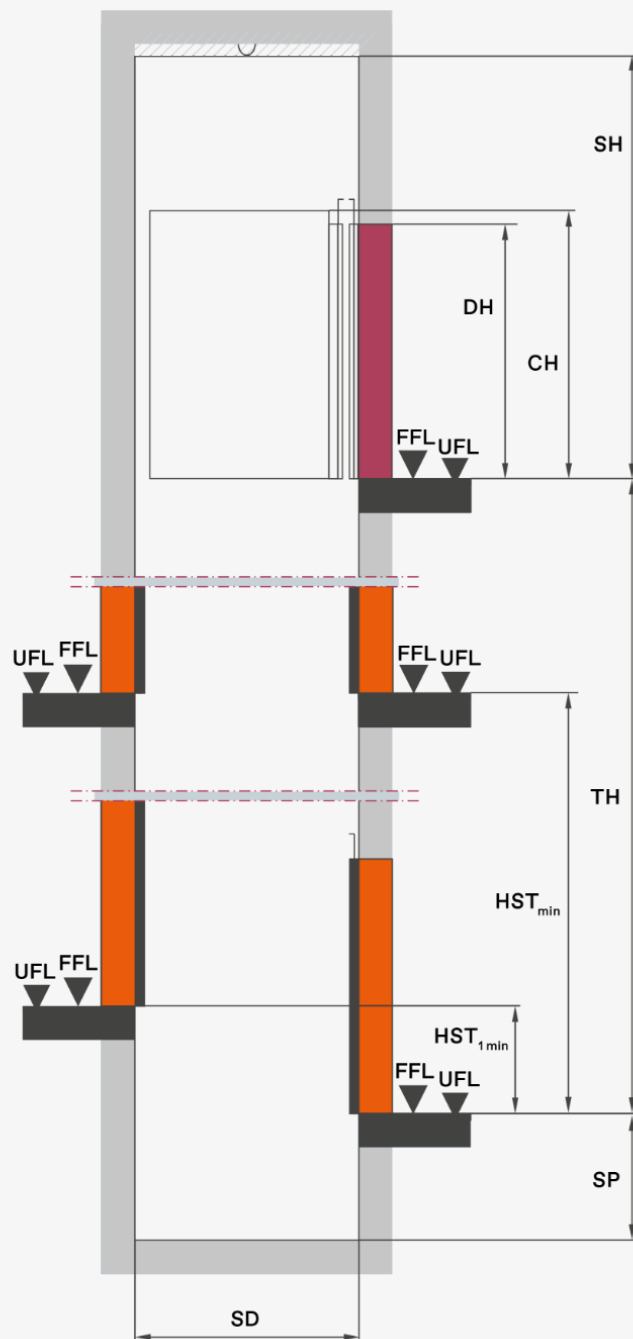
Values

SD	see dimension page
SH_{standard}	from 3300 mm at 1.0 m/s up to 4500 mm at 3.0 m/s (with CH=2100 mm*)
SH_{reduced}	from 2900 mm at 1 m/s and CH=2100 mm* (available ≤ 1,600 kg)
SP_{standard}	from 1100 mm at 1 m/s up to 2350 mm at 3.0 m/s
SP_{reduced}	900 mm at 1.0 m/s (available ≤ 1,600 kg)
TH	max. 100 m at 3.0 m/s
HST_{min}	min. DH + 590 mm
HST_{1 min}	min. 200 mm
CH	2000 – 2700 mm
DH	2000 – 2500 mm

Key

SD	shaft depth
SH	shaft head
SP	shaft pit
TH	travel height
HST_{min}	min. height between floors
CH	cabin height
DH	door height
CS	controller system
FFL	finished floor level
UFL	unfinished floor level

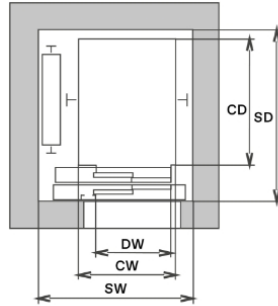
* an increase in car height always results in an equal increase of the shaft head (e.g. CH+100 mm leads to SH+100 mm)



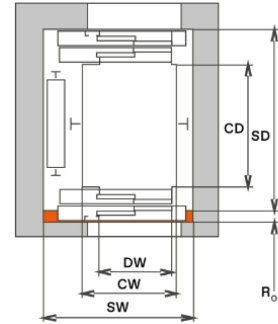
Door options

Key

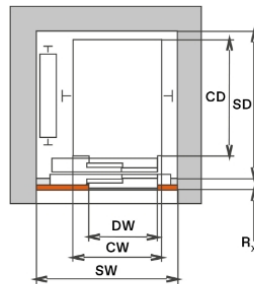
L2	2-panel side-opening door
C2	2-panel central-opening door
S	single entrance
D	double entrance
SF	single entrance, shaft front wall with gap cover
R_o	optional recess
R_x	directly in the shaft or in the recess (100 mm L2, 60 mm C2)
DW	door width
CW	cabin width
SW	shaft width
CD	cabin depth
SD	shaft depth



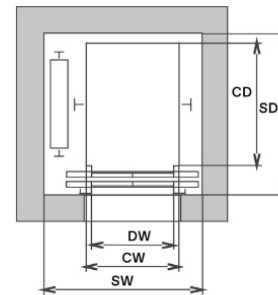
L2 / S



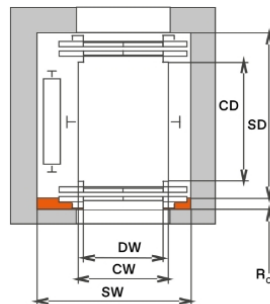
L2 / D



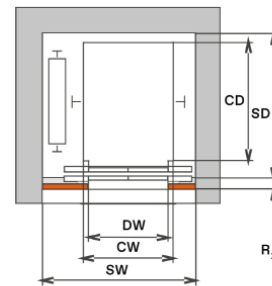
L2 / SF



C2 / S

















C2 / D



C2 / SF

Dimensions

SYSTEM				CABIN		DOOR		SHAFT							
Rated load 	Passengers 	Speed 	Travel height max. 	Cabin width x cabin depth 	Cabin height 	Type of entrance	Door type	Door width 	Door height 	Shaft width 	Shaft depth door in the shaft 	Shaft depth door in recess 	Shaft depth door in deep recess 	Shaft pit 	Shaft head ²⁾ 
kg	No	m/s	m	mm	mm			mm	mm	mm	mm	mm	mm	mm	mm
630	8	1.0-1.6	40-60	1100x1400	2100-2700	S/D	L2-C2-C4	800-1000	2000-2500						
630	8	1.0	40	1100x1400	2100	S	L2	900	2000	1600	1800	1745	1700	1100-900 ³⁾	3300-2900 ⁴⁾
630	8	1.0	40	1100x1400	2100	D	L2	900	2000	1600	2040	1930	1840	1100-900 ³⁾	3300-2900 ⁴⁾
630	8	1.0	40	1100x1400	2100	S	C2	900	2000	1960	1740	1680	–	1100-900 ³⁾	3300-2900 ⁴⁾
630	8	1.0	40	1100x1400	2100	D	C2	900	2000	1960	1920	1800	–	1100-900 ³⁾	3300-2900 ⁴⁾
630	8	1.6	60	1100x1400	2100	S	L2	900	2000	1614	1)	1)	1)	1200	3500
630	8	1.6	60	1100x1400	2100	S	C2	900	2000	1960	1)	1)	1)	1200	3500
675	9	1.0-2.0	40-80	1200x1400	2100-2700	S/D	L2-C2-C4	800-1100	2000-2500						
675	9	1.0	40	1200x1400	2100	S	L2	900	2000	1700	1800	1745	1700	1100-900 ³⁾	3300-2900 ⁴⁾
675	9	1.0	40	1200x1400	2100	D	L2	900	2000	1700	2040	1930	1840	1100-900 ³⁾	3300-2900 ⁴⁾
675	9	1.0	40	1200x1400	2100	S	C2	900	2000	1960	1740	1680	–	1100-900 ³⁾	3300-2900 ⁴⁾
675	9	1.0	40	1200x1400	2100	D	C2	900	2000	1960	1920	1800	–	1100-900 ³⁾	3300-2900 ⁴⁾
675	9	1.6	60	1200x1400	2100	S	L2	900	2000	1714	1)	1)	1)	1200	3500
675	9	1.6	60	1200x1400	2100	S	C2	900	2000	1960	1)	1)	1)	1200	3500
675	9	2.0	80	1200x1400	2100	S	L2	900	2000	1814	1)	1)	1)	1500	3800
675	9	2.0	80	1200x1400	2100	S	C2	900	2000	1987	1)	1)	1)	1500	3800
800	10	1.0-1.6	40-60	1350x1400	2100-2700	S/D	L2-C2-C4	800-1200	2000-2500						
800	10	1.0	40	1350x1400	2100	S	L2	900	2000	1850	1800	1745	1700	1100-900 ³⁾	3300-2900 ⁴⁾
800	10	1.0	40	1350x1400	2100	D	L2	900	2000	1850	2040	1930	1840	1100-900 ³⁾	3300-2900 ⁴⁾
800	10	1.0	40	1350x1400	2100	S	C2	900	2000	2015	1740	1680	–	1100-900 ³⁾	3300-2900 ⁴⁾
800	10	1.0	40	1350x1400	2100	D	C2	900	2000	2015	1920	1800	–	1100-900 ³⁾	3300-2900 ⁴⁾
800	10	1.6	60	1350x1400	2100	S	L2	900	2000	1864	1)	1)	1)	1200	3500
800	10	1.6	60	1350x1400	2100	S	C2	900	2000	2022	1)	1)	1)	1200	3500
1000	13	1.0-1.6	40-60	1100x2100	2100-2700	S/D	L2-C2-C4	800-1000	2000-2500						
1000	13	1.0	40	1100x2100	2100	S	L2	900	2000	1600	2500	2445	2400	1100-900 ³⁾	3300-2900 ⁴⁾
1000	13	1.0	40	1100x2100	2100	D	L2	900	2000	1600	2740	2630	2540	1100-900 ³⁾	3300-2900 ⁴⁾
1000	13	1.0	40	1100x2100	2100	S	C2	900	2000	1960	2440	2380	–	1100-900 ³⁾	3300-2900 ⁴⁾
1000	13	1.0	40	1100x2100	2100	D	C2	900	2000	1960	2620	2500	–	1100-900 ³⁾	3300-2900 ⁴⁾

1000	13	1.6	60	1100×2100	2100	S	L2	900	2000	1614	1)	1)	1)	1200	3500
1000	13	1.6	60	1100×2100	2100	S	C2	900	2000	1960	1)	1)	1)	1200	3500
1000	13	1.0-3.0	40-100	1400×1600	2100-2700	S/D	L2-C2-C4	800-1300	2000-2500						
1000	13	1.0	40	1400×1600	2100	S	L2	1000	2000	1900	2000	1945	1900	1100-900 ³⁾	3300-2900 ⁴⁾
1000	13	1.0	40	1400×1600	2100	D	L2	1000	2000	1900	2240	2130	2040	1100-900 ³⁾	3300-2900 ⁴⁾
1000	13	1.0	40	1400×1600	2100	S	C2	1000	2000	2160	1940	1880	–	1100-900 ³⁾	3300-2900 ⁴⁾
1000	13	1.0	40	1400×1600	2100	D	C2	1000	2000	2160	2120	2000	–	1100-900 ³⁾	3300-2900 ⁴⁾
1000	13	1.6	60	1400×1600	2100	S	L2	1000	2000	1914	1)	1)	1)	1200	3500
1000	13	1.6	60	1400×1600	2100	S	C2	1000	2000	2160	1)	1)	1)	1200	3500
1000	13	2.0	80	1400×1600	2100	S	L2	1000	2000	2047	1)	1)	1)	1500	3900
1000	13	2.0	80	1400×1600	2100	S	C2	1000	2000	2220	–	1)	1)	1500	3900
1000	13	2.5	100	1400×1600	2100	S	L2	1000	2000	2047	1)	1)	1)	1725	4100
1000	13	2.5	100	1400×1600	2100	S	C2	1000	2000	2220	1)	1)	1)	1725	4100
1000	13	3.0	100	1400×1600	2100	S	L2	1000	2000	2047	1)	1)	1)	2350	4500
1000	13	3.0	100	1400×1600	2100	S	C2	1000	2000	2220	1)	1)	1)	2350	4500
1000	13	1.0-2.5	40-100	1600×1400	2100-2700	S/D	L2-C2-C4	800-1500	2000-2500						
1000	13	1.0	40	1600×1400	2100	S	L2	1000	2000	2100	1800	1745	1700	1100-900 ³⁾	3300-2900 ⁴⁾
1000	13	1.0	40	1600×1400	2100	D	L2	1000	2000	2100	2040	1930	1840	1100-900 ³⁾	3300-2900 ⁴⁾
1000	13	1.0	40	1600×1400	2100	S	C2	1000	2000	2240	1740	1680	–	1100-900 ³⁾	3300-2900 ⁴⁾
1000	13	1.0	40	1600×1400	2100	D	C2	1000	2000	2240	1920	1800	–	1100-900 ³⁾	3300-2900 ⁴⁾
1000	13	1.6	60	1600×1400	2100	S	L2	1000	2000	2114	1)	1)	1)	1200	3500
1000	13	1.6	60	1600×1400	2100	S	C2	1000	2000	2247	1)	1)	1)	1200	3500
1000	13	2.0	80	1600×1400	2100	S	L2	1000	2000	2164	1)	1)	1)	1500	3900
1000	13	2.0	80	1600×1400	2100	S	C2	1000	2000	2267	1)	1)	1)	1500	3900
1000	13	2.5	100	1600×1400	2100	S	L2	1000	2000	2239	1)	–	–	1725	4100
1000	13	2.5	100	1600×1400	2100	S	C2	1000	2000	2327	1)	–	–	1725	4100
1000	13	1.0-2.5	40-100	2100×1100	2100-2700	S/D	L2-C2-C4	800-2000	2000-2500						
1000	13	1.0	40	2100×1100	2100	S	L2	1300	2000	2600	1600	1545	1500	1150-950 ³⁾	3300
1000	13	1.0	40	2100×1100	2100	S	C2	1300	2000	2790	1540	1480	–	1150-950 ³⁾	3300
1000	13	1.6	60	2100×1100	2100	S	L2	1300	2000	2614	1)	1)	1)	1250	3500
1000	13	1.6	60	2100×1100	2100	S	C2	1300	2000	2797	1)	1)	1)	1250	3500
1275	17	1.0-2.5	40-100	1200×2250	2100-2700	S/D	L2-C2-C4	800-1100	2000-2500						
1275	17	1.0	40	1200×2250	2100	S	L2	1000	2000	1745	2650	2595	2550	1150-900 ³⁾	3300-2950
1275	17	1.0	40	1200×2250	2100	D	L2	1000	2000	1745	2890	2780	2690	1150-900 ³⁾	3300-2950
1275	17	1.0	40	1200×2250	2100	S	C2	1000	2000	2160	2590	2530	–	1150-900 ³⁾	3300-2950
1275	17	1.0	40	1200×2250	2100	D	C2	1000	2000	2160	2770	2650	–	1150-900 ³⁾	3300-2950
1275	17	1.6	60	1200×2250	2100	S	L2	1000	2000	1752	1)	1)	1)	1250	3500
1275	17	1.6	60	1200×2250	2100	S	C2	1000	2000	2160	1)	1)	1)	1250	3500
1275	17	2.0	80	1200×2250	2100	S	L2	1000	2000	1847	1)	1)	1)	1500	3900
1275	17	2.0	80	1200×2250	2100	S	C2	1000	2000	2160	1)	1)	1)	1500	3900
1275	17	2.5	100	1200×2250	2100	S	L2	1000	2000	1847	1)	1)	1)	1725	4100
1275	17	2.5	100	1200×2250	2100	S	C2	1000	2000	2160	1)	1)	1)	1725	4100
1275	17	1.0-3.0	40-100	1200×2300	2100-2700	S/D	L2-C2-C4	800-1100	2000-2500						
1275	17	1.0	40	1200×2300	2100	S	L2	1000	2000	1745	2700	2645	2600	1150-900 ³⁾	3300-2950
1275	17	1.0	40	1200×2300	2100	D	L2	1000	2000	1745	2940	2830	2740	1150-900 ³⁾	3300-2950

1275	17	1.0	40	1200×2300	2100	S	C2	1000	2000	2160	2640	2580	–	1150-900 ³⁾	3300-2950
1275	17	1.0	40	1200×2300	2100	D	C2	1000	2000	2160	2820	2700	–	1150-900 ³⁾	3300-2950
1275	17	1.6	60	1200×2300	2100	S	L2	1000	2000	1752	1)	1)	1)	1250	3500
1275	17	1.6	60	1200×2300	2100	S	C2	1000	2000	2160	1)	1)	1)	1250	3500
1275	17	2.0	80	1200×2300	2100	S	L2	1000	2000	1847	1)	1)	1)	1500	3900
1275	17	2.0	80	1200×2300	2100	S	C2	1000	2000	2160	1)	1)	1)	1500	3900
1275	17	2.5	100	1200×2300	2100	S	L2	1000	2000	1847	1)	1)	1)	1725	4100
1275	17	2.5	100	1200×2300	2100	S	C2	1000	2000	2160	1)	1)	1)	1725	4100
1275	17	3.0	100	1200×2300	2100	S	L2	1000	2000	1847	1)	1)	1)	2350	4500
1275	17	3.0	100	1200×2300	2100	S	C2	1000	2000	2160	1)	1)	1)	2350	4500
1275	17	1.0-3.0	40-100	2000×1400	2100-2700	S/D	L2-C2-C4	800-1900	2000-2500						
1275	17	1.0	40	2000×1400	2100	S	L2	1300	2000	2540	1800	1745	1700	1150-900 ³⁾	3300-2950
1275	17	1.0	40	2000×1400	2100	D	L2	1300	2000	2540	2040	1930	1840	1150-900 ³⁾	3300-2950
1275	17	1.0	40	2000×1400	2100	S	C2	1300	2000	2760	1740	1680	–	1150-900 ³⁾	3300-2950
1275	17	1.0	40	2000×1400	2100	D	C2	1300	2000	2760	1920	1800	–	1150-900 ³⁾	3300-2950
1275	17	1.6	60	2000×1400	2100	S	L2	1300	2000	2552	1)	1)	1)	1250	3500
1275	17	1.6	60	2000×1400	2100	S	C2	1300	2000	2760	1)	1)	1)	1250	3500
1275	17	2.0	80	2000×1400	2100	S	L2	1300	2000	2637	1)	–	–	1500	3900
1275	17	2.0	80	2000×1400	2100	S	C2	1300	2000	2826	1)	–	–	1500	3900
1275	17	2.5	100	2000×1400	2100	S	L2	1300	2000	2637	1)	–	–	1725	4100
1275	17	2.5	100	2000×1400	2100	S	C2	1300	2000	2826	1)	–	–	1725	4100
1275	17	3.0	100	2000×1400	2100	S	L2	1300	2000	2647	1)	–	–	2350	4500
1275	17	3.0	100	2000×1400	2100	S	C2	1300	2000	2820	1)	–	–	2350	4500
1600	21	1.0-3.0	40-100	1400×2400	2100-2700	S/D	L2-C2-C4	800-1300	2000-2500						
1600	21	1.0	40	1400×2400	2100	S	L2	1100	2000	1940	2800	2745	2700	1150-900 ³⁾	3300-2950
1600	21	1.0	40	1400×2400	2100	D	L2	1100	2000	1940	3040	2930	2840	1150-900 ³⁾	3300-2950
1600	21	1.0	40	1400×2400	2100	S	C2	1100	2000	2360	2740	2680	–	1150-900 ³⁾	3300-2950
1600	21	1.0	40	1400×2400	2100	D	C2	1100	2000	2360	2920	2800	–	1150-900 ³⁾	3300-2950
1600	21	1.6	60	1400×2400	2100	S	L2	1100	2000	1952	1)	1)	1)	1250	3500
1600	21	1.6	60	1400×2400	2100	S	C2	1100	2000	2360	1)	1)	1)	1250	3500
1600	21	2.0	80	1400×2400	2100	S	L2	1100	2000	2047	1)	1)	1)	1500	3900
1600	21	2.0	80	1400×2400	2100	S	C2	1100	2000	2360	1)	1)	1)	1500	3900
1600	21	2.5	100	1400×2400	2100	S	L2	1100	2000	2047	1)	1)	1)	1725	4100
1600	21	2.5	100	1400×2400	2100	S	C2	1100	2000	2360	1)	1)	1)	1725	4100
1600	21	3.0	100	1400×2400	2100	S	L2	1100	2000	2047	1)	1)	1)	2350	4500
1600	21	3.0	100	1400×2400	2100	S	C2	1100	2000	2360	1)	1)	1)	2350	4500
1600	21	1.0-2.5	40-100	1420×2400	2100-2700	S/D	L2-C2-C4	800-1300	2000-2500						
1600	21	1.0	40	1420×2400	2100	S	L2	1100	2000	1960	2800	2745	2700	1150-900 ³⁾	3300-2950
1600	21	1.0	40	1420×2400	2100	D	L2	1100	2000	1960	3040	2930	2840	1150-900 ³⁾	3300-2950
1600	21	1.0	40	1420×2400	2100	S	C2	1100	2000	2360	2740	2680	–	1150-900 ³⁾	3300-2950
1600	21	1.0	40	1420×2400	2100	D	C2	1100	2000	2360	2920	2800	–	1150-900 ³⁾	3300-2950
1600	21	1.6	60	1420×2400	2100	S	L2	1100	2000	1972	1)	1)	1)	1250	3500
1600	21	1.6	60	1420×2400	2100	S	C2	1100	2000	2360	1)	1)	1)	1250	3500
1600	21	2.0	80	1420×2400	2100	S	L2	1100	2000	2067	1)	1)	1)	1500	3900
1600	21	2.0	80	1420×2400	2100	S	C2	1100	2000	2360	1)	1)	1)	1500	3900
1600	21	2.5	100	1420×2400	2100	S	L2	1100	2000	2067	1)	1)	1)	1725	4100
1600	21	2.5	100	1420×2400	2100	S	C2	1100	2000	2360	1)	1)	1)	1725	4100
1600	21	1.0-2.5	40-100	1950×1750	2100-2700	S/D	L2-C2-C4	800-1800	2000-2500						

1600	21	1.0	40	1950×1750	2100	S	L2	1300	2000	2490	2150	2095	2050	1150-900 ³⁾	3300-2950
1600	21	1.0	40	1950×1750	2100	D	L2	1300	2000	2490	2390	2280	2190	1150-900 ³⁾	3300-2950
1600	21	1.0	40	1950×1750	2100	S	C2	1300	2000	2760	2090	2030	–	1150-900 ³⁾	3300-2950
1600	21	1.0	40	1950×1750	2100	D	C2	1300	2000	2760	2270	2150	–	1150-900 ³⁾	3300-2950
1600	21	1.6	60	1950×1750	2100	S	L2	1300	2000	2502	1)	1)	1)	1250	3500
1600	21	1.6	60	1950×1750	2100	S	C2	1300	2000	2760	1)	1)	1)	1250	3500
1600	21	2.0	80	1950×1750	2100	S	L2	1300	2000	2597	1)	–	–	1500	3900
1600	21	2.0	80	1950×1750	2100	S	C2	1300	2000	2795	1)	–	–	1500	3900
1600	21	2.5	100	1950×1750	2100	S	L2	1300	2000	2597	1)	1)	1)	1725	4100
1600	21	2.5	100	1950×1750	2100	S	C2	1300	2000	2795	1)	1)	1)	1725	4100
1600	21	1.0-2.5	40-100	2100×1600	2100-2700	S/D	L2-C2-C4	800-2000	2000-2500						
1600	21	1.0	40	2100×1600	2100	S	L2	1300	2000	2640	2000	1945	1900	1150-900 ³⁾	3300-2950
1600	21	1.0	40	2100×1600	2100	D	L2	1300	2000	2640	2240	2130	2040	1150-900 ³⁾	3300-2950
1600	21	1.0	40	2100×1600	2100	S	C2	1300	2000	2800	1940	1880	–	1150-900 ³⁾	3300-2950
1600	21	1.0	40	2100×1600	2100	D	C2	1300	2000	2800	2120	2000	–	1150-900 ³⁾	3300-2950
1600	21	1.6	60	2100×1600	2100	S	L2	1300	2000	2652	1)	1)	1)	1250	3500
1600	21	1.6	60	2100×1600	2100	S	C2	1300	2000	2806	1)	1)	1)	1250	3500
1600	21	2.0	80	2100×1600	2100	S	L2	1300	2000	2747	1)	–	–	1500	3900
1600	21	2.0	80	2100×1600	2100	S	C2	1300	2000	2879	1)	–	–	1500	3900
1600	21	2.5	100	2100×1600	2100	S	L2	1300	2000	2747	1)	1)	1)	1725	4100
1600	21	2.5	100	2100×1600	2100	S	C2	1300	2000	2870	1)	1)	1)	1725	4100
2000	26	1.0-2.5	40-100	1500×2700	2100-2700	S/D	L2-C2-C4	800-1400	2000-2500						
2000	26	1.0	40	1500×2700	2100	S	L2	1300	2000	2225	3100	3045	3000	1250	3600
2000	26	1.0	40	1500×2700	2100	D	L2	1300	2000	2225	3340	3230	3140	1250	3600
2000	26	1.0	40	1500×2700	2100	S	C2	1300	2000	2760	3040	2980	–	1250	3600
2000	26	1.0	40	1500×2700	2100	D	C2	1300	2000	2760	3220	3100	–	1250	3600
2000	26	1.6	60	1500×2700	2100	S	L2	1300	2000	2232	1)	1)	1)	1350	3750
2000	26	1.6	60	1500×2700	2100	S	C2	1300	2000	2760	1)	1)	1)	1350	3750
2000	26	2.0	80	1500×2700	2100	S	L2	1300	2000	2232	1)	1)	1)	1500	3900
2000	26	2.0	80	1500×2700	2100	S	C2	1300	2000	2760	1)	1)	1)	1500	3900
2000	26	2.5	100	1500×2700	2100	S	L2	1300	2000	2232	1)	1)	1)	1725	4150
2000	26	2.5	100	1500×2700	2100	S	C2	1300	2000	2760	1)	1)	1)	1725	4150
2500	33	1.0-2.0	40-80	1800×2700	2100-2700	S/D	L2-C2-C4	800-1700	2000-2500						
2500	33	1.0	40	1800×2700	2100	S	C4	1600	2000	2620	3100	3045	–	1300	3600
2500	33	1.0	40	1800×2700	2100	D	C4	1600	2000	2620	3340	3230	–	1300	3600
2500	33	1.6	60	1800×2700	2100	S	C4	1600	2000	2620	1)	1)	–	1350	3750
2500	33	2.0	80	1800×2700	2100	S	C4	1600	2000	2620	1)	1)	–	1500	3900

- 1) The shaft depth does not depend on the speed: With $v \geq 1.6$ m/s, the corresponding values as specified in the lines with $v = 1.0$ m/s apply.
2) Headroom height at CH = 2100 mm and height-adjustable railing on the car roof; with rigid car roof railing + 400 mm.
3) Reduced pit depth available as an option (rated load ≤ 1600 kg, travel height ≤ 30 m, 1.0 m/s).
4) Reduced shaft headroom height available as an option (rated load ≤ 1600 kg, travel height ≤ 20 m, speed 1.0 m/s, with power regeneration, sliding guides on the counterweight and without safety gear on the counterweight).

L2: 2 panel side-opening door, **C2:** 2-panel central-opening door, **C4:** 4-panel central-opening door. **Entrance type:** S – single entrance, D – dual entrance (180°). **Recess depths:** L2: Recess = 55 mm, depth of recess = 100 mm; C2: Recess = 60 mm, depth of recess = 60 mm; C4: Recess = 100 mm. **Shaft tolerance:** ± 25 mm, in the area of the headroom/shaft pit -0/+ 25 mm.

Examples of shaft dimensions for the door types L2, C2 and C4 are specified with common door widths. For door dimensions deviating from this, you can obtain the corresponding shaft dimensions on request. Depending on the equipment, the shaft dimensions can deviate from the specified values (for example special position of the control panel in the elevator car).

ABOUT TK ELEVATOR

We are elevator people. Striving to move the world. Known for a passion for technology with service at the heart at our business.

Over the past decades, TK Elevator has established itself as one of the world's leading elevator companies and became independent after its sale by thyssenkrupp AG in August 2020. To our customers in over 100 countries we provide an extensive service network that guarantees close proximity, with more than 1,000 locations and over 50,000 employees.

TK Elevator's most important business line is our manufacturer-independent service for mobility solutions represented by over 24,000 service technicians.

Our new installation product portfolio ranges from commodity elevators for residential and commercial buildings to cutting-edge, highly customised solutions for state-of-the-art skyscrapers. What's more, it also consists of escalators and moving walks, passenger boarding bridges, stair and platform lifts. Integrated cloud-based service solutions, such as the MAX platform, are gaining in importance. These digital offerings mean there are no longer any limits to urban mobility.

TK Elevator – move beyond

50,000+


We are a team of over 50,000 colleagues

 **24,000+**

With more than 24,000 best-trained technicians

 **100+**

We serve customers in over 100 countries

 **1,000+**

From more than 1,000 locations worldwide



TKELEVATOR.COM

TK Elevator Europe Africa GmbH
E-Plus-Strasse 1
40472 Düsseldorf
Germany
info@tkelevator.com

evolution 200 en-EA v07/04/2022

The details quoted in this brochure can only be viewed as binding when confirmed expressly in writing. Reproduction and storage only with authorization of TK Elevator. Colours, options and specifications are subject to change. All cabin design options illustrated in this brochure are for illustrative purposes only. The samples shown may vary from the original in colour and material. Patterned samples are not to scale. Your TK Elevator contact will gladly provide you with real material samples.